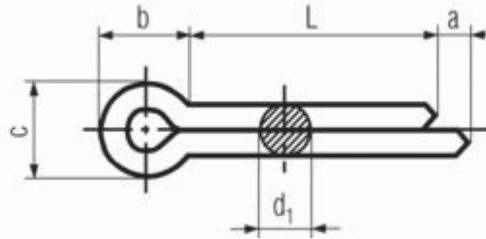


## DIN 94 - Cotter Pins Specifications



\*All measurements in millimeters (mm)\*

Nom. Dia.	d <sub>1</sub>		c		a max.	b approx.
	min.	max.	min.	max.		
1	0.8	0.9	1.6	1.8	1.6	3
1.2	0.9	1	1.7	2	2.5	3
1.6	1.3	1.4	2.4	2.8	2.5	3.2
2	1.7	1.8	3.2	3.6	2.5	4
2.5	2.1	2.3	4	4.6	2.5	5
3.2	2.7	2.9	5.1	5.8	3.2	6.4
4	3.5	3.7	6.5	7.4	4	8
5	4.4	4.6	8	9.2	4	10
6.3	5.7	5.9	10.3	11.8	4	12.6
8	7.3	7.5	13.1	15	4	16
10	9.3	9.5	16.6	19	6.3	20
13	12.1	12.4	21.7	24.8	6.3	26

FOR INFORMATION PURPOSES ONLY

©Fastener Network Holdings Ltd, Unit B, Grazebrook Industrial Park, Peartree Lane, Dudley, West Midlands, DY2 0XW, United Kingdom

T: +44 (0) 1384 217 600 F: +44 (0) 1384 217 606

[www.fastenernetwork.co.uk](http://www.fastenernetwork.co.uk)